



March 2, 2022

# Construction to Begin on Contra Costa Canal

*As-Needed Trail Closures During Work Hours*

In our ongoing efforts to maintain a reliable supply of water to our customers, Contra Costa Water District will soon rehabilitate a section of the concrete-lined Contra Costa Canal in your neighborhood. The Contra Costa Canal is the backbone of our water system, supplying water to treatment plants, businesses, and cities in central and eastern Contra Costa County. Keeping this facility in good condition is critical to the reliability of your water service.

Your water service will not be affected while this project is underway. We are sending this notice to make you aware of our activities near your home. This project is funded with the rates you pay for regular water service.

## **Work Schedule**

Start: March 14, 2022  
Estimated end: March 31, 2022  
Work hours: 8 a.m. to 5 p.m. Monday-Friday

## **Work Location**

Work is within the canal right-of-way between Oak Grove Road and Citrus Ave. (see map on opposite side).

## **What to Expect**

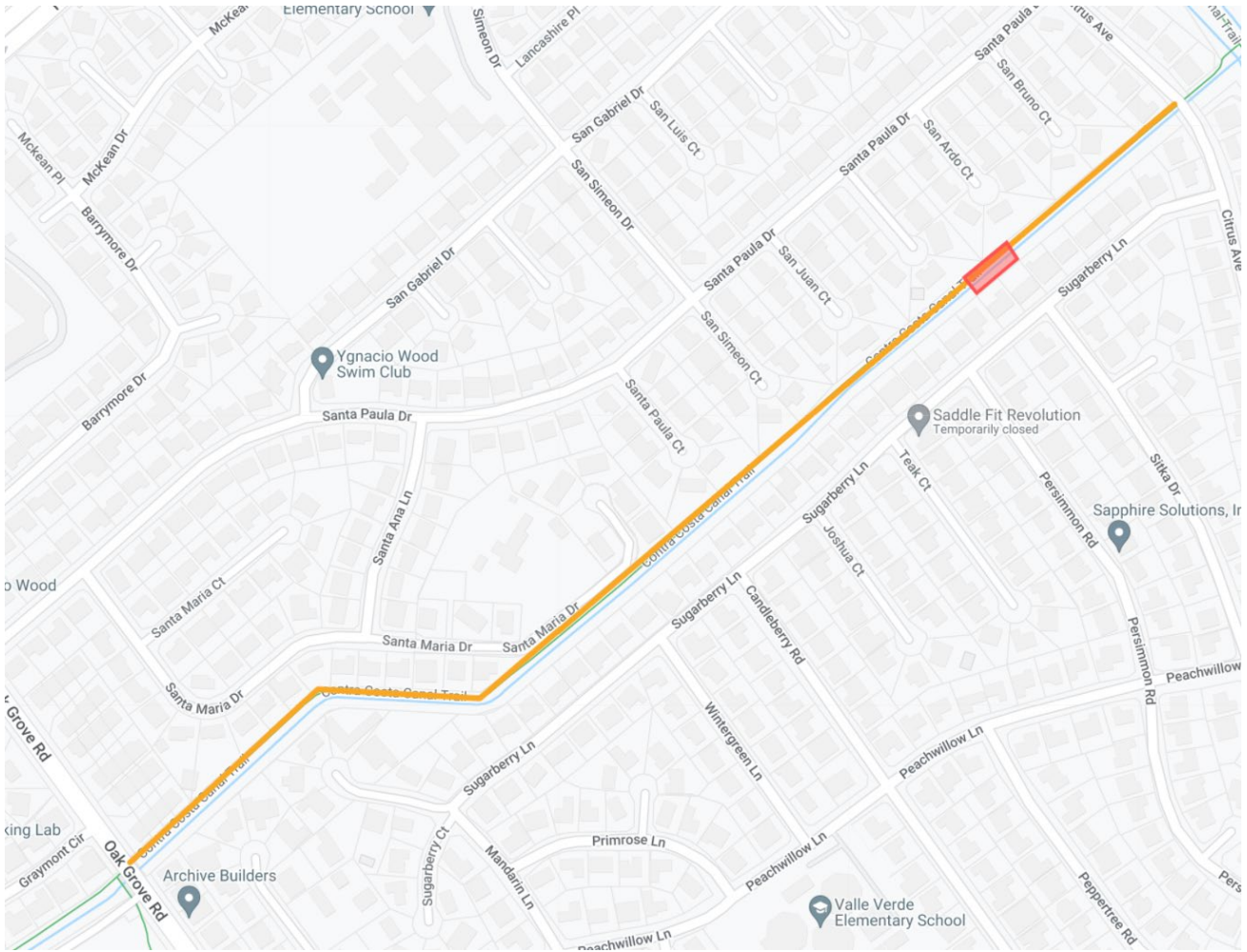
The scope of work includes replacement of about 40' of concrete liner in this section of the Contra Costa Canal. All work will be performed within the canal right-of-way. Construction materials and equipment will be staged in the vicinity. While work is underway, expect to hear construction-related noise and traffic.

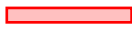
## **Temporary Trail Closures**


For the safety of our crews and trail users, the Canal Trail will be closed as-needed during work hours from Oak Grove Road to Citrus Ave. The trail will remain open as much as possible. These closures were coordinated with the East Bay Regional Park District.

## **Contact**

Contra Costa Water District appreciates your patience and understanding while we complete this work. If you have any questions about this project, contact Oliver Symonds at [osymonds@ccwater.com](mailto:osymonds@ccwater.com) or 925-688-8010. For urgent matters occurring outside of normal business hours, please call 925-688-8374.



 Approximate work location

 As-needed trail closures during work hours