



\*We encourage "catch and release" for all largemouth bass.  
\*\*Funds are used to purchase and stock fish.  
†Weight limits apply.

Boats must be returned to the marina 90 minutes before the watershed closes. The fish-cleaning station closes 30 minutes before the watershed closes. Private boats are not allowed on the reservoir. This includes float tubes, canoes, kayaks and other watercraft. Boat rentals may be suspended when conditions are windy; please call ahead, **925-371-2628**.

Deposits are required on all boat rentals—cash or credit card only. Half-off discounts offered Tuesday–Thursday (non-holidays only). No other discounts are valid on mid-week dates. A half-day rental is three to five hours, or the life of the battery pack.

|                       |          |                      |          |
|-----------------------|----------|----------------------|----------|
| 18-foot Electric Boat | \$25.00  | Hourly Rate          | \$25.00  |
| Pontoon Boat          | \$50.00  | Half Day (3–5 hours) | \$105.00 |
|                       | \$145.00 | Full Day (5+ hours)  | \$70.00  |
|                       | \$65.00  | Security Deposit     | \$150.00 |

### Boat Rental Fees

California State Fishing License is also required. Daily Fishing Fee\*\* \$4.75 per angler

### Fishing Fees

|                                     |    |
|-------------------------------------|----|
| Catfish                             | 10 |
| Trout/Salmon                        | 5  |
| Striped Bass (minimum 18 inches)    | 2  |
| Bluegill/Sunfish                    | 25 |
| Crappie                             | 25 |
| Largemouth Bass (minimum 12 inches) | 5* |

### Fishing Limits

Worms, nightcrawlers, crickets, grasshoppers, grubs, liver, salmon eggs, powerbait, artificial lures and any bait purchased from the Los Vaqueros Marina are allowed. No live bait other than those listed above are allowed.

### Allowable Bait

## General Precautions

Natural hazards exist in the Los Vaqueros Watershed. For your safety, never hike, bike or jog alone. Always use caution and common sense. Watch children closely at all times.

### Protect Sensitive Animal Species

The watershed is home to sensitive species protected by state and federal law. These include California red-legged frog, California tiger salamander, Alameda whipsnake, San Joaquin kit fox, golden eagle and others. It is illegal to capture, harm or harass any protected species or its habitat.

### Wildlife Precautions

**Rattlesnakes** are sometimes encountered by visitors. Rattlesnakes tend to be most active from late winter through mid-autumn, but can be found year-round. They are usually not aggressive, but may strike if startled or harassed. To avoid contact with rattlesnakes, avoid rocky areas, boulders, downed logs and ledges. If you see one, keep at a safe distance and give the snake room to escape.

**Mountain lions** are rarely sighted in the watershed. They are most active at dawn, dusk and night. Keep small children close to you, and never approach a mountain lion. If you do encounter one, make noise and wave your arms to make yourself appear larger. Do not run, throw rocks or other objects. Pick up small children. Fight back if attacked. Call 9-1-1 immediately if a mountain lion attacks a person. Please report location, time and date of lion sightings to the Watershed Office at **925-240-2360** as soon as possible.

**Coyotes** seldom are aggressive, but may attack if they feel threatened. Never feed or approach a coyote. If followed by a coyote, make loud noises.

**Ticks** can be plentiful in grassy and brushy areas. Always check yourself carefully for ticks after visiting the watershed.

**Tarantulas** can be found during the fall months. These usually docile arachnids can bite, causing discomfort for several days. The fine-barbed hairs on a tarantula can also cause irritable reactions for some people. Please do not disturb them.

### Wildfire

Fire danger is high most of the year. Use caution when barbecuing, only smoke in designated areas and never throw burning objects out of a car window. Violating these rules may result in a fine.

## Special Programs

### Whopper Club

Win a glass Whopper Mug when you catch one of the following fish at the listed weights or larger.

|                  |           |
|------------------|-----------|
| Trout            | 5 pounds  |
| Catfish          | 12 pounds |
| Striped Bass     | 12 pounds |
| Largemouth Bass* | 5 pounds  |

\*Fish must be released and photo provided.

### Rainbow Trout Limit Club

We give you a pin every time you catch the limit. Four pins earn a hat.

### FitKid™

Kids can earn fun prizes by making healthy choices and having fun outdoors.

### Loaner Rods & Reels for First-Time Anglers

We have rods and reels available for first-time anglers. We will also provide some tackle, instructions and helpful advice. (A \$20 refundable deposit is required for each rod/reel combination.)

Ask about these programs at the Marina or the John Muir Interpretive Center.

## Watershed Rules

- Dogs and pets (except service dogs) are not allowed.
- Vehicles must stay in parking areas and on paved roads.
- Body contact with the water (swimming, wading) is prohibited.
- Plants and animals, geologic, archaeological and historic objects are strictly protected. Do not disturb or collect them
- Do not release cats, bullfrogs, fish or other animals.
- Do not feed animals in the watershed.
- Fires are permitted in designated barbecue pits only.
- Smoking is allowed in designated areas only.
- Trail users must stay on trails.
- Bicycles and horses are allowed on designated multi-use trails only.
- The following are not permitted: fireworks, camping, alcoholic beverages, hunting, firearms and other weapons.
- Vehicles must display a valid watershed parking permit.

## Fishing and Boating

Fishing opportunities are abundant at the reservoir:

Rainbow trout, largemouth bass, striped bass, channel catfish, king salmon, sunfish and carp are all available to anglers. Rainbow trout are planted regularly. All California Fish and Wildlife regulations are in effect.

A state fishing license is required along with a Los Vaqueros fishing access permit. All fishing access fees are used to stock the reservoir.

### On the South Side of the Reservoir

Learn all about the Los Vaqueros Reservoir Project, area history and natural resources at the Interpretive Center, which is located on the north side of the reservoir at the end of Walnut Boulevard. Weekend programs and special events are offered.

### Marina Complex

9990 Los Vaqueros Road, Byron, CA  
925-371-2628  
www.norcalfishing.com  
www.ccwater.com/losvaqueros

### On the North Side of the Reservoir

Concrete fishing platform near Los Vaqueros Dam  
Peninsula Cove fishing pier  
North side fishing access depends on water level.  
Call **925-371-2628** for updates.

- 16-foot electric boat rentals (1–4 people)
- 18-foot pontoon boat rentals (6–8 people)
- Fishing piers and shoreline fishing
- Fish-cleaning station
- Wheelchair-accessible pier
- Bait, tackle and snack sales
- Friendly, knowledgeable staff
- Loaner rods/reels, plus help for first-time anglers
- Landscaped, shaded picnic areas
- Small event room available

## Recreational Facilities

### John Muir Interpretive Center

9:00 am – 4:00 pm  
Saturdays and Sundays  
925-240-2440  
www.ccwater.com/losvaqueros

Hikers can use all trails. Some trails are multi-use, which means they are open for bicycling and horseback riding. Most multi-use trails connect to the Walnut Staging Area, which offers a parking area for horse trailers. Trail sections are sometimes closed for environmental reasons. Please respect all posted trail closures.

Picnic sites are located throughout the watershed at staging areas, the interpretive center and the marina. Groups may reserve sites at the Kellogg Creek Picnic Area and the marina by calling **925-371-2628**.

### Picnicking

Trail sections are sometimes closed for environmental reasons. Please respect all posted trail closures.

## General Information

### Hours of Operation

The watershed and marina are open to the public seven days a week, including holidays. Hours of operation are:

|                     |                   |
|---------------------|-------------------|
| September           | 7:00 am – 7:00 pm |
| October             | 7:00 am – 6:00 pm |
| November – February | 7:00 am – 5:00 pm |
| March               | 7:00 am – 6:00 pm |
| April – August      | 6:00 am – 8:00 pm |

Gates are locked promptly at closing time. Call **925-688-8374** after hours.

### Parking Fees

|                           |                     |
|---------------------------|---------------------|
| General Parking Fee       | \$6.00 per vehicle  |
| CCWD Residents' Fee       | \$4.00 per vehicle  |
| Senior Non-Residents' Fee | \$5.00 per vehicle  |
| Van (10–20 passengers)    | \$12.00 per vehicle |

The Los Vaqueros Watershed consists of 18,500 acres of open space surrounding the 1,900-acre Los Vaqueros Reservoir. The reservoir stores up to 160,000 acre-feet of water for Contra Costa Water District customers in Central and Eastern Contra Costa County. You can learn more about the watershed and the Los Vaqueros Reservoir Project by visiting the John Muir Interpretive Center located near the dam, on the north side of the reservoir.

# Welcome to the Los Vaqueros Watershed

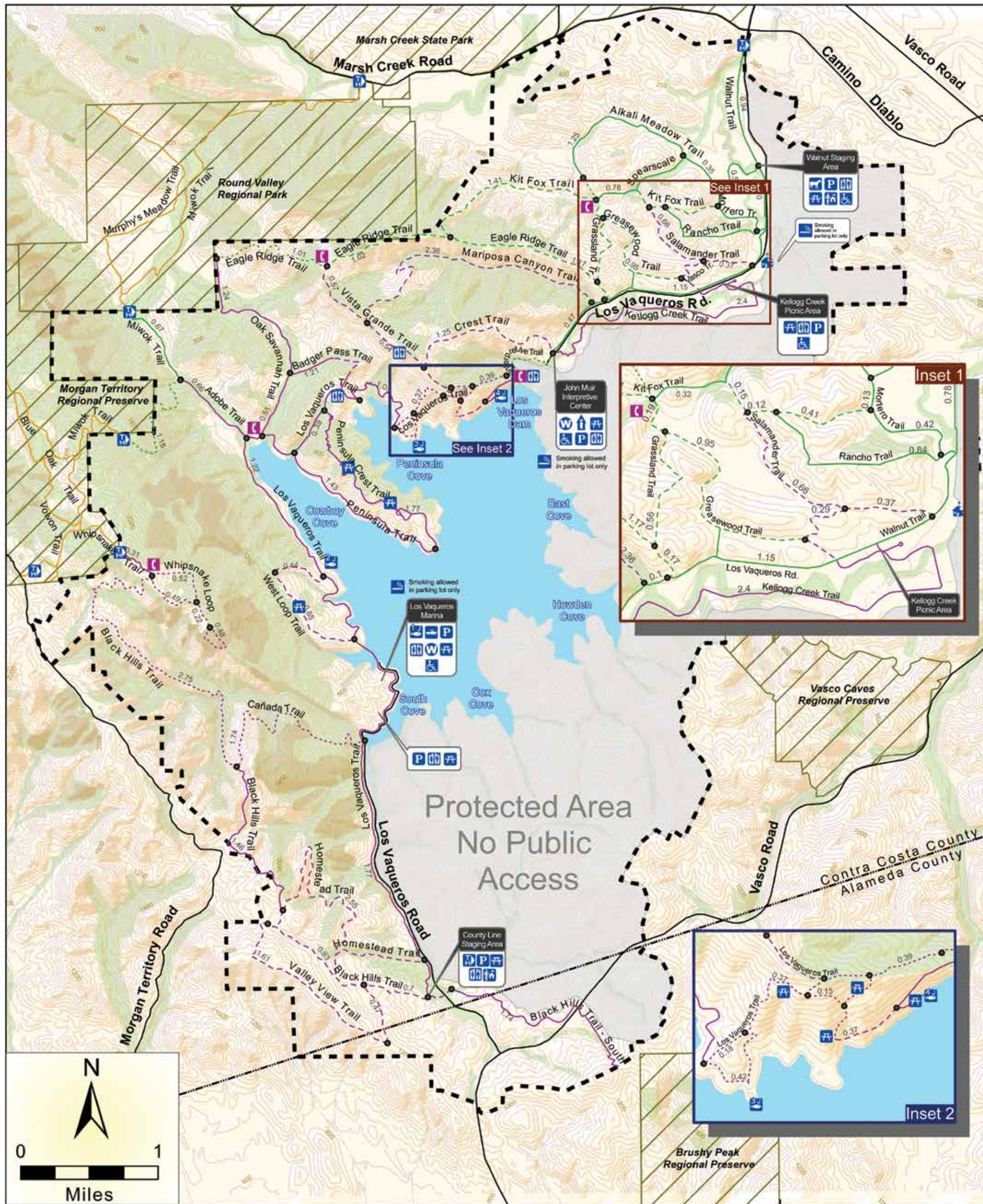


## Trail & Facility Map





# Los Vaqueros Watershed



### Facilities

- Watershed Office
- Entry Kiosk
- Interpretive Center
- Picnic Area
- Marina
- Pier
- ADA-Accessible Facility

- Parking
- Emergency Call Box
- Restroom
- Water
- Horse Water
- Regional Trail Connection
- Smoking Allowed In Parking Lot Area Only

### Recreational Trails

- Easy    Intermediate    Difficult
- 1.0 (miles)
- Hiking Only
  - Multiple-Use (hiking, biking, equestrian)
  - Regional Trail

### Other Features

- County Line
- Watershed Boundary
- Stream
- Contour (50 ft)
- Regional or State Park

### Vegetation

- Woodland
- Chaparral