

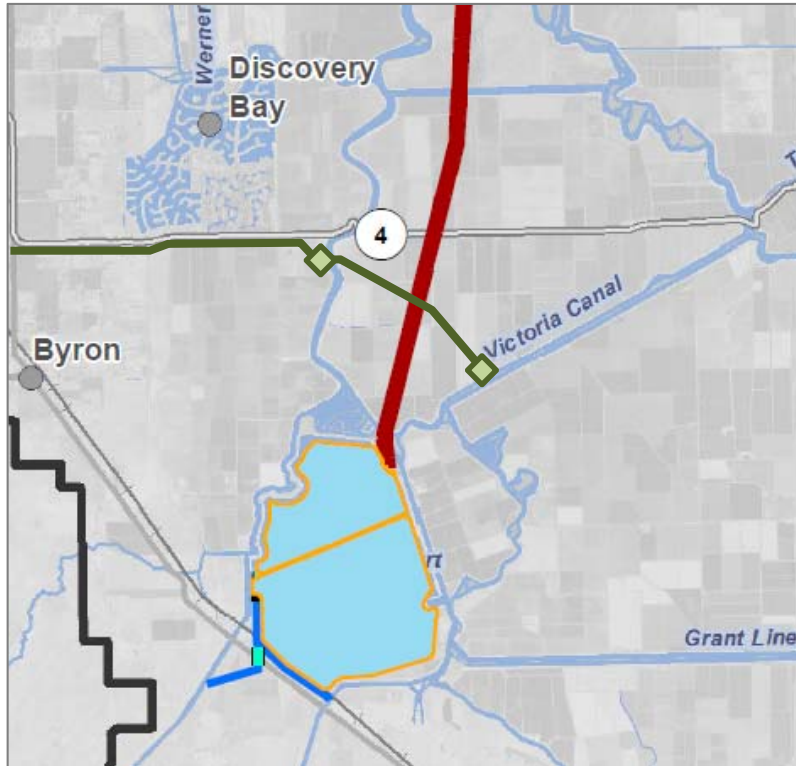
INSURANCE PROTECTING CONTRA COSTA WATER DISTRICT'S DRINKING WATER QUALITY AND WATER SUPPLY IF THE CALIFORNIA WATERFIX IS BUILT

Contra Costa Water District (CCWD) diverts water from the Sacramento-San Joaquin Delta for 500,000 drinking water customers in and near the Delta. Absent protective mitigation, the proposed California WaterFix (CWF) project would affect CCWD's ability to deliver a reliable supply of high-quality water to its customers at a reasonable price.

- **CCWD is an active participant in finding solutions that support the coequal goals of water supply reliability and Delta ecosystem improvement.**
 - CCWD believes the status quo is unsustainable.
 - CCWD supports comprehensive improvements in storage, conservation, regional reliability, ecosystem protection and restoration, drought preparedness, levees, and operational flexibility.
 - CCWD is not a customer or a proponent of the CWF.
 - CCWD built over \$1 billion in improvements over the past 20 years to secure our future and has secured an agreement to protect these benefits.

- **The agreement with the state ensures that CCWD's customers are protected if the CWF is built.**
 - *CCWD's customers will be fully protected from water quality, water supply, and construction impacts.*
 - The agreement assures that CCWD has continued access to high quality water to serve its customers and to maintain storage in Los Vaqueros Reservoir.
 - The agreement protects CCWD's facilities in the Delta on and near Victoria Island from CWF construction impacts.
 - CCWD maintains its ability to engage on Delta water quality and broader Delta issues.
 - *The insurance provided by the agreement is responsive to the actual project construction and operations, and will be protective over the long-term.*
 - The agreement continues for the life of the CWF.
 - Protection is guaranteed from the full range of potential impacts of CWF construction and operations to CCWD customers.
 - CCWD will continue to meet its customers' needs whether or not the CWF is built.
 - *This agreement will not cause CCWD rates to increase.*
 - The state is responsible for all costs under the agreement.
 - *Many agreements and permits will be required for the CWF to be built; this agreement does not enable the CWF to be implemented.*
 - *CCWD will continue to engage fully on concerns with the CWF impacts related to CCWD's federal water supply contract, including future water allocations and finances.*

**BDCP/CWF TUNNELS WILL CROSS UNDERNEATH
CCWD'S MIDDLE RIVER PIPELINE**



CCWD Facilities

- ◆ CCWD Intakes
- CCWD Pipelines

BDCP/CWF Facilities

- ▭ Delta Boundary
- Canal
- ▬ Siphon
- Tunnels
- ▭ Forebay